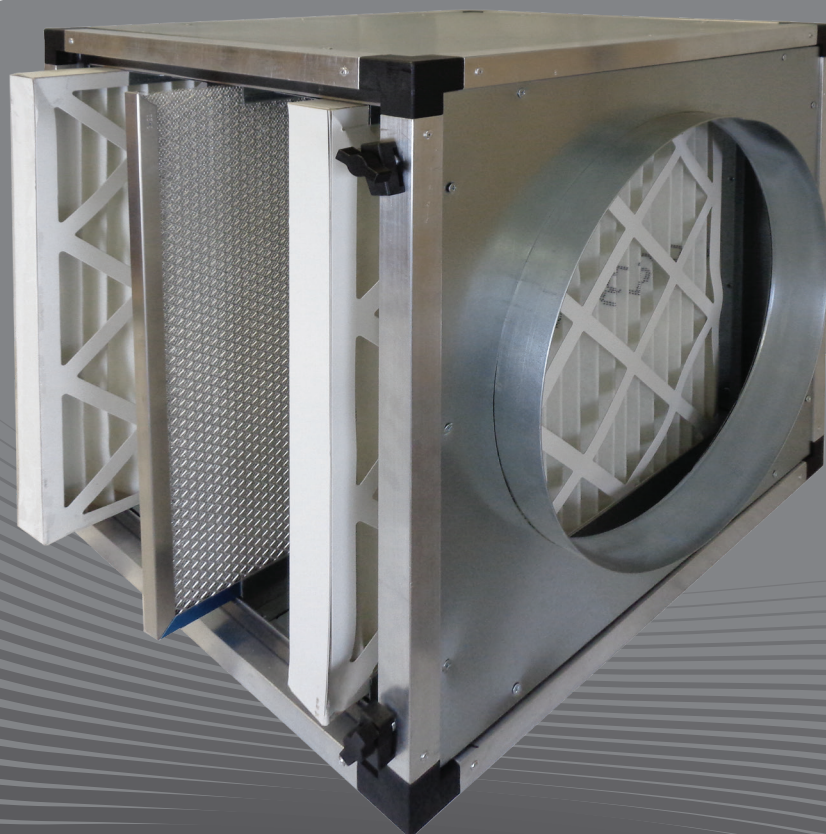


# WALPOL

Assembly and operating instructions

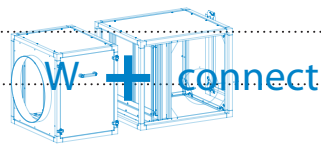
Filter box type W-FB



Version 7.0  
B15

# Content

<b>1. General information</b> .....	<b>3</b>
<b>2. Important safety instructions</b> .....	<b>3</b>
2.1. Personal.....	3
2.2. Personal protective equipment.....	3
<b>3. Description</b> .....	<b>3</b>
3.1. Application area.....	3
<b>4. Transportation</b> .....	<b>3</b>
<b>5. Lineup</b> .....	<b>3</b>
<b>6. Installation</b> .....	<b>4</b>
6.1. In single operation.....	4
6.2. In the W-Connect system.....	5
<b>7. Maintenance</b> .....	<b>5</b>



## 1. General information

For reasons of clarity, these operating instructions do not contain all detailed information and cannot take into account every conceivable case of setting, operation or maintenance.

If you require further information or encounter problems not listed in the operating instructions, please contact our customer service department with confidence. We reserve the right to make changes in the interest of technical progress!

## 2. Important safety instructions

Planners, plant constructors and operators are responsible for proper installation and operation in accordance with the intended use.

- Read the operating instructions completely and carefully.
- Operating instructions and other applicable documents must be kept. They must be available on site at all times.
- Local and national laws and regulations must be observed and complied with.
- Consider the plant-relevant conditions and requirements of the plant manufacturer or plant builder.
- Safety devices must not be dismantled, bypassed or rendered inoperative.
- The aerosol separator may only be used when in perfect condition.
- Safety devices must not be dismantled, bypassed or rendered inoperative.

### 2.1. Personal



#### **Danger**

**Untrained, unqualified or uninstructed personnel must not operate the system!**

The personnel for operation, maintenance and repair must be appropriately qualified for this work and be familiar with the installation, operating and maintenance instructions, in particular with regard to the instructions contained therein and the applicable regulations on occupational safety and accident prevention.

### 2.2. Personal protective equipment

Protective equipment must be worn during any work in the vicinity of the activated carbon module.

- Protective clothing
- Protective gloves
- Safety goggles
- Safety shoes
- Safety helmet
- Mouthguard

## 3. Description

### 3.1. Application area

**For filtering and cleaning exhaust and supply air.**

- Filter box for installation in duct and pipe systems.
- The box has three slots for the installation of on-site filters (accessories)

## 4. Transportation

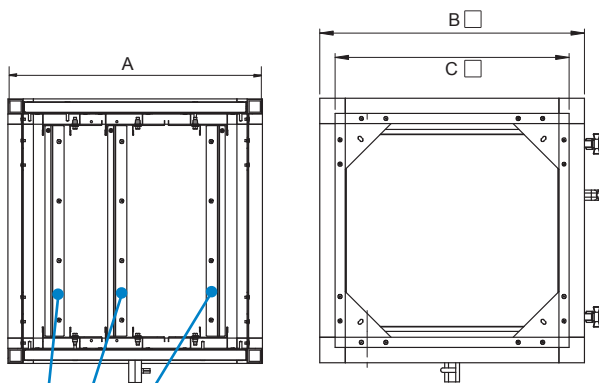
- Do not stand under and/or next to the load when lifting and setting down.
- Instruct all bystanders to leave the danger area.

## 5. Lineup

- Use protective equipment, see chapter 2.2.
- Direct all persons not required to set up out of the danger area.
- The machine must be easily accessible from all sides

## 6. Installation

### 6.1. In single operation



#### Dimensions

Dimensions  
(in mm)

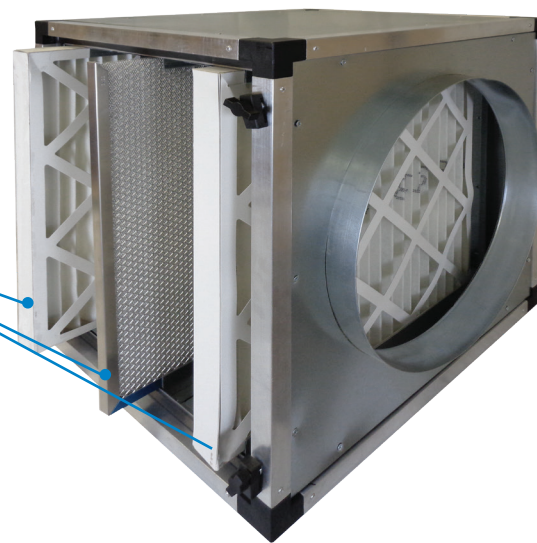
	FB 520	FB 690	FB 820	FB 1020
A	500	500	500	500
B	520	690	820	1020
C	460	630	760	960

W-Connect  
type

S-520 M-690 L-820 XL-1020

3 slots for  
square filters  
Filter thickness variable  
20mm to 50 mm

The filters shown are not  
included in the standard  
version.

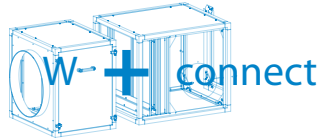


#### Note

We recommend to make the installation before the fan to protect the fan from contamination.

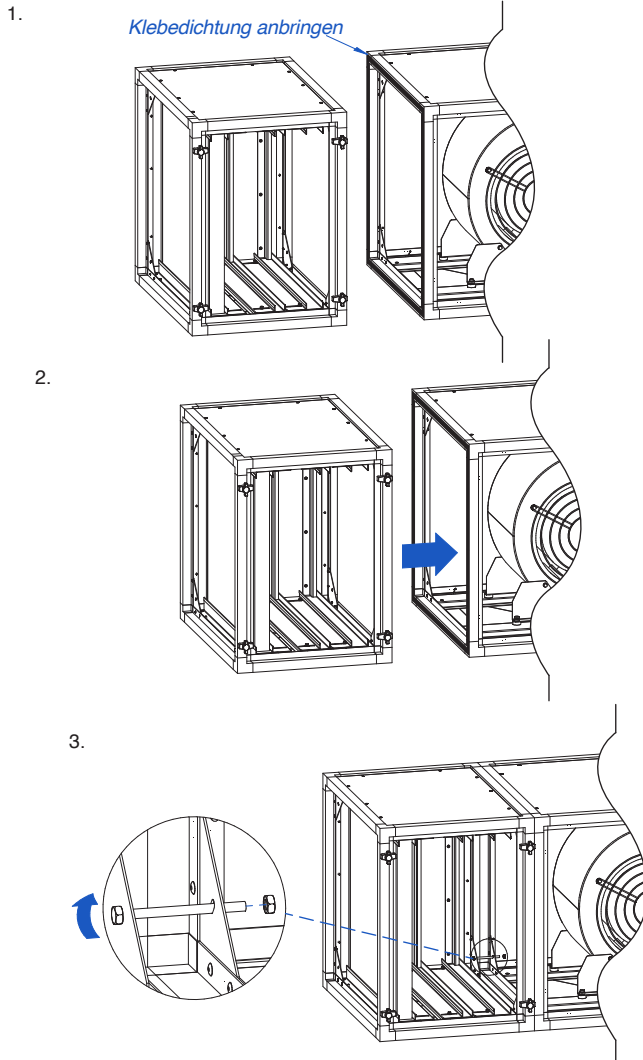
- if necessary, install suction and blow-out panel in filter box (accessories)
- Install filter box in existing pipe or duct system.
- If the connection cross-section of the existing exhaust air pipe is different from that on the filter box, a pipe reducer/extension must be used.
- Access to the inspection door must be guaranteed
- Set filter mounting rail to desired filter width
- Slide the filter sideways into the mounting rail
- Connect condensate drain if necessary

## 6.2. In the W-Connect system



### Note

Only modules of the same size can be connected to each other.



The screw connection system is already integrated in the Kompakt fan type CLC, filter box type FB and activated carbon module type WAM series. **The W-Connect Kit must be used with the GBV and GBG airboxes.**

## 7. Maintenance

- We recommend at least weekly visual inspection/maintenance
- Switch off the exhaust air system/fan (in particular, prevent the unit from being switched on during this time)
- Use protective equipment see 2.2
- Open the inspection door
- Clean housing with water and a little detergent as needed
- Pull the filter out of the guide rail
- Clean or replace filter according to manufacturer's instructions
- Close inspection door

[www.WALPOL.eu](http://www.WALPOL.eu)