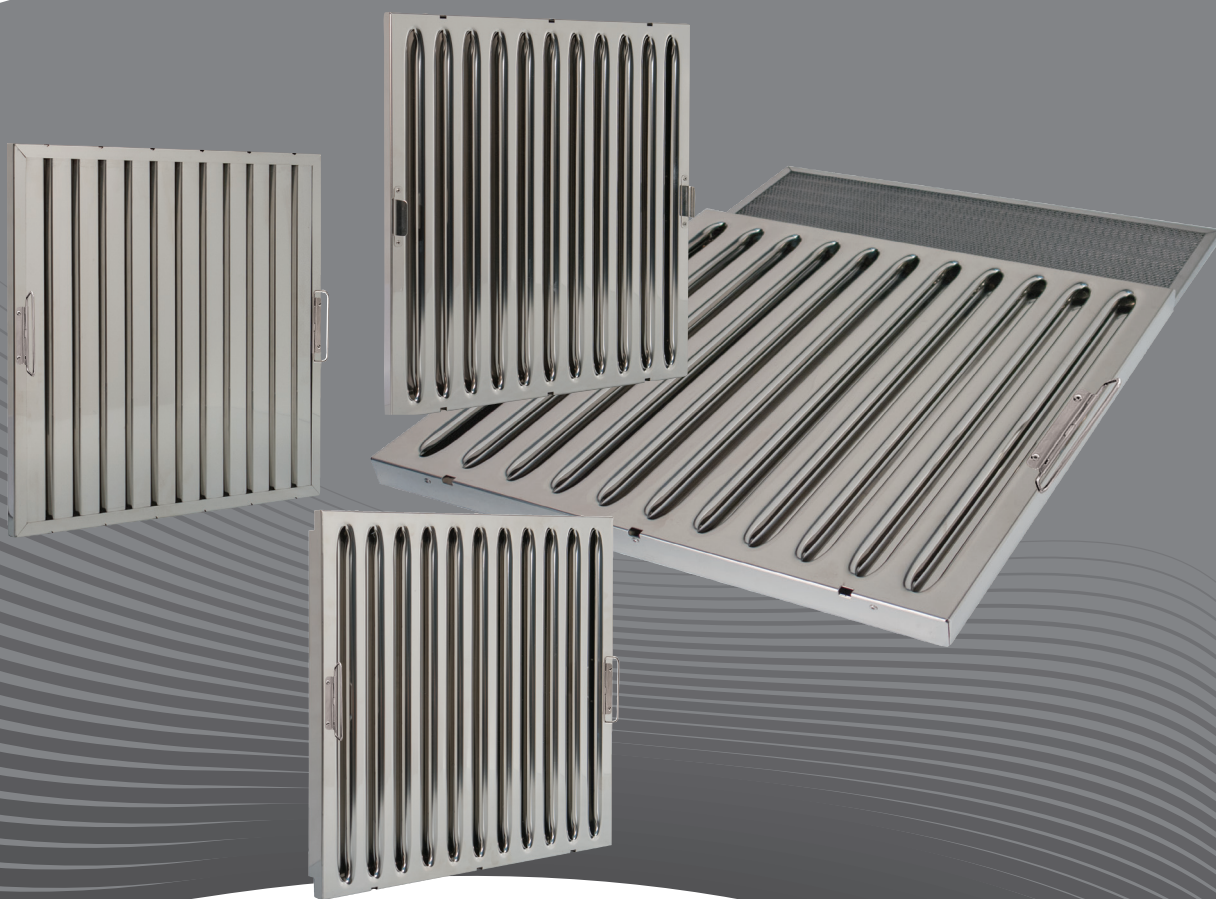


WALPOL

Installation and operating instructions

Aerosol separator
according to DIN EN 16282-6



Version 6.1
B02

Contents

1. General information	3
2. Important safety information	3
2.1. General notes	3
2.2. Personal protective equipment.....	3
2.3. Personnel.....	3
3. Description	3
3.1. Intended use	3
3.2. Certification and information	4
3.3. Operation of UV / C systems.....	4
3.4. Volume flows of aerosol separator.....	5
4. Installation	7
4.1. Starting up before installation.....	7
4.2. Notes on installation/removal in accordance with the hood/ventilation ceiling manufacturer's instructions.....	8
5. Cleaning the separator	9
6. Maintenance of the separator	9

1. General information

For reasons of clarity, this operating manual does not contain all the detailed information and can not cover every conceivable case of adjustment, operation or maintenance.

Should you require further information or problems occur that are not listed in the operating instructions, please contact our customer service with confidence. Changes that serve technical progress are reserved!

2. Important safety information

Planners, property owners, specialist companies and operators must then prove that all standards, guidelines, laws have been observed.

- Read the operating instructions completely and carefully.
- Keep the operating instructions and other valid documents, such as the circuit diagram or motor instructions, with the fan. They must always be available at the place of use.
- Observe and respect local conditions, regulations and laws.
- Abide by the system-related conditions and requirements of the system manufacturer or plant constructor.
- Safety elements may not be dismantled, circumvented or deactivated.
- Only use the separator in a flawless condition.

2.1. General notes

Important

Among other things, the BG Rules for Work in Kitchens of the Technical Committee „Food and Beverage“ of BGZ (BGR 111) must be observed for installation and operation.

2.2. Personal protective equipment

When installing and removing the aerosol separator, the protective equipment must be worn.

- protective working gloves
- goggles

2.3. Personnel



Caution

Untrained, unqualified or not instructed personnel may not operate the system!

Personnel for operation, maintenance and repair must be appropriately qualified for this work and must be familiar with the installation, operating and maintenance instructions, in particular with regard to the instructions contained therein and the applicable occupational safety and accident prevention regulations.

3. Description

3.1. Intended use

The aerosol separators are suitable for extractor hoods and various filter applications in Ventilation systems (according to VDI 2052)

When used in an extractor hood, the angle of inclination of the separator should be approx. 45 ° degrees.

3.2. Certification and information



Note

The DIN 18869-5 standard has been discontinued.
The successor standard is DIN EN 16282-6 and affects the European Union

Applications according to DIN EN 16282-6:

Kitchen areas exclusively for **Type F-1** thermal appliances e.g. Cookrooms, Cook and Chill

Series:	Test number:
FF2A / FF2AD	TÜV 26635160-13/2013
FF4-S35A/S35AD/G35/G35AD	DMT APS 200 161 17
FS-20A/FS-20K35	DMT APS 200 064 18
FS-25A	DMT APS 200 118 19
FS-20K40	DMT APS 200 065 18
FM-25/20AD/40KS/40KG	DMT PPS200061221

Kitchen areas which are **Type F-2** food preparation, distribution and storage

Series:	Test number:
FF-4, FZ-5, FS-5	No certificate according to standard

3.3. Operation of UV / C systems

The combination separators of the FF4-S35A/S35AD/G35/G35AD/, FM-40 KS/KG/,FS-20K40,FS-20K35, FZ-35KA series are suitable for operating UV/C systems in kitchen hoods. The separators must be operated with an anti-glare rail (accessories).

Please note: The separators were calibrated with UV Radiometer SXL 55 measuring range C, measuring sensor „UV-Surface“ (manufacturer sglux) Radiation source: Type CHS-90WH-Oz (2x) Ø 19.00 mm, 160W, 0.8 A, <130°C, 185nm - 11W - 254nm - 52W irradiance Eeff measured at a distance of 10 cm from the separator.



Note

No flame retardant filter/separator exceeds the value Eeff = 0.50 mW/m² according to DIN EN 16282-8, 6.3 under the above test setup.



Regard

Walpol assumes no liability for the amount of radiation occurring on site!

Walpol has no influence on the type of heater, installation situation, output, number of heaters, hood design, etc. The above values are only valid as a reference with the above-mentioned radiation source.

The radiation must be measured and checked on site by the UV lamp installation company. In the case of hoods that have UV lamps installed ex factory, they must be measured and checked at the factory.

3.4. Volume flows of aerosol separator



Note

For silent operation, the recommended nominal flow rates should be maintained. With higher volume flows, higher noise levels can be expected due to the increased pressure loss.

For information on special dimensions not listed in the table, please contact Walpol.

Dimensions		Serie FF2A & FF2AD				Serie FF4-S35A & FF-4S35AD			
Width mm	Height mm	Pressure loss pa	recommended nominal flow m ³ /h	Pressure loss pa	tested volume flow m ³ /h	Pressure loss pa	recommended nominal flow m ³ /h	Pressure loss pa	tested volume flow m ³ /h
250	500	47	250	110	400	33	250	48	300
300	500	47	300	110	480	33	300	48	360
350	500	47	350	110	560	33	350	48	420
398	398	47	317	110	507	33	317	48	380
400	400	47	320	110	512	33	320	48	384
400	450	47	360	110	576	33	360	48	432
400	500	47	400	110	640	33	400	48	480
450	300	47	270	110	432	33	270	48	324
450	400	47	360	110	576	33	360	48	432
480	450	47	432	110	691	33	432	48	518
485	485	47	470	110	753	33	470	48	565
494	494	47	488	110	781	33	488	48	586
495	495	47	490	110	784	33	490	48	588
498	498	47	496	110	794	33	496	48	595
500	250	47	250	110	400	33	250	48	300
500	300	47	300	110	480	33	300	48	360
500	350	47	350	110	560	33	350	48	420
500	400	47	400	110	640	33	400	48	480
500	450	47	450	110	720	33	450	48	540
500	500	47	500	110	800	33	500	48	600

Dimensions		Serie FF4-G35A & FF-4G35AD				Serie FM-20 (AD)			
Width mm	Height mm	Pressure loss pa	recommended nominal flow m ³ /h	Pressure loss pa	tested volume flow m ³ /h	Pressure loss pa	recommended nominal flow m ³ /h	Pressure loss pa	tested volume flow m ³ /h
250	500	35	250	68	300	60	250	103	300
300	500	35	300	68	360	60	300	103	360
350	500	35	350	68	420	60	350	103	420
398	398	35	317	67	380	60	317	103	380
400	400	35	320	67	384	60	320	103	384
400	450	35	360	68	432	60	360	103	432
400	500	35	400	68	480	60	400	103	480
450	300	35	270	68	324	60	270	103	324
450	400	35	360	68	432	60	360	103	432
480	450	35	432	68	518	60	432	103	518
485	485	35	470	68	565	60	470	103	565
494	494	35	488	68	586	60	488	103	586
495	495	35	490	68	588	60	490	103	588
498	498	35	496	68	595	60	496	103	595
500	250	35	250	68	300	60	250	103	300
500	300	35	300	68	360	60	300	103	360
500	350	35	350	68	420	60	350	103	420
500	400	35	400	68	480	60	400	103	480
500	450	35	450	68	540	60	450	103	540
500	500	35	500	68	600	60	500	103	600

Data interpolated from dimensions 500x500mm.

Dimensions		Serie FM-25				Serie FM-40KS			
Width mm	Height mm	Pressure loss pa	recommended nominal flow m ³ /h	Pressure loss pa	tested volume flow m ³ /h	Pressure loss pa	recommended nominal flow m ³ /h	Pressure loss pa	tested volume flow m ³ /h
250	500	48	250	76	300	51	250	84	300
300	500	48	300	76	360	51	300	84	360
350	500	48	350	76	420	51	350	84	420
398	398	48	317	76	380	51	317	84	380
400	400	48	320	76	384	51	320	84	384
400	450	48	360	76	432	51	360	84	432
400	500	48	400	76	480	51	400	84	480
450	300	48	270	76	324	51	270	84	324
450	400	48	360	76	432	51	360	84	432
480	450	48	432	76	518	51	432	84	518
485	485	48	470	76	565	51	470	84	565
494	494	48	488	76	586	51	488	84	586
495	495	48	490	76	588	51	490	84	588
498	498	48	496	76	595	51	496	84	595
500	250	48	250	76	300	51	250	84	300
500	300	48	300	76	360	51	300	84	360
500	350	48	350	76	420	51	350	84	420
500	400	48	400	76	480	51	400	84	480
500	450	48	450	76	540	51	450	84	540
500	500	48	500	76	600	51	500	84	600

Dimensions		Serie FM-40KG				Serie FS-20			
Width mm	Height mm	Pressure loss pa	recommended nominal flow m ³ /h	Pressure loss pa	tested volume flow m ³ /h	Pressure loss pa	recommended nominal flow m ³ /h	Pressure loss pa	tested volume flow m ³ /h
250	500	50	250	81	300	74	225	142	300
300	500	50	300	81	360	74	270	142	360
350	500	50	350	81	420	74	315	142	420
398	398	50	317	81	380	74	285	142	380
400	400	50	320	81	384	74	288	142	384
400	450	50	360	81	432	74	324	142	432
400	500	50	400	81	480	74	360	142	480
450	300	50	270	81	324	74	243	142	324
450	400	50	360	81	432	74	324	142	432
480	450	50	432	81	518	74	389	142	518
485	485	50	470	81	565	74	423	142	565
494	494	50	488	81	586	74	439	142	586
495	495	50	490	81	588	74	441	142	588
498	498	50	496	81	595	74	446	142	595
500	250	50	250	81	300	74	225	142	300
500	300	50	300	81	360	74	270	142	360
500	350	50	350	81	420	74	315	142	420
500	400	50	400	81	480	74	360	142	480
500	450	50	450	81	540	74	405	142	540
500	500	50	500	81	600	74	450	142	600

Data interpolated from dimensions 500x500mm.

Dimensions		Serie FS-20K40				Serie FS-5		Serie FF-4	
Width mm	Height mm	Pressure loss pa	recommended nominal flow m ³ /h	Pressure loss pa	tested volume flow m ³ /h	Pressure loss pa	recommended nominal flow m ³ /h	Pressure loss pa	recommended nominal flow m ³ /h
250	500	52	250	85	300	50	250	29	250
300	500	52	300	85	360	50	300	29	300
350	500	52	350	85	420	50	350	29	350
398	398	52	317	85	380	50	317	29	317
400	400	52	320	85	384	50	320	29	320
400	450	52	360	85	432	50	360	29	360
400	500	52	400	85	480	50	400	29	400
450	300	52	270	85	324	40	270	22	270
450	400	52	360	85	432	50	360	29	360
480	450	52	432	85	518	50	432	29	432
485	485	52	470	85	565	50	470	29	470
494	494	52	488	85	586	40	488	22	488
495	495	52	490	85	588	50	490	29	490
498	498	52	496	85	595	40	496	22	496
500	250	52	250	85	300	50	250	29	250
500	300	52	300	85	360	50	300	29	300
500	350	52	350	85	420	50	350	29	350
500	400	52	400	85	480	50	400	29	400
500	450	52	450	85	540	50	450	29	450
500	500	52	500	85	600	50	500	29	500

Data interpolated from dimensions 500x500mm.

4. Installation

4.1. Starting up before installation

Tools needed: Pop rivet pliers for the bore-version, kick or ladder

All series:

The front (visible side) must have handles when it is put into operation.



Version boreholes:

For versions without mounted handle (supplied loose): Mount the handle with rivets and pop rivet pliers



Version threaded hole:

Screw in round handle



Important

Observe the correct installation position of the separators.

The slats of the separators must always point in the vertical direction (from top to bottom) to ensure the grease drain.



Please note with the combination separator series FF4-S35A/AD/G35A/AD, FS-20K35/K40, FM-40KS/KG:

Combination separators consist of an impact separator (front side = visible side) and an expanded metal or mesh filter (rear side). Opening for the expanded/mesh metal filter is on top. The two-piece separator is secured against falling out by a quick-release lock.

expanded/mesh metal filter



quick-release lock



impact separator



Regard

Before installing, ensure that the rear filter element is seated correctly! risk of injury filter element falling out!

Important

With all combi separators, the knitted or snap-in metal filter element must be cleaned before the first use in order to remove any oil residues from the production process

4.2. Notes on installation/removal in accordance with the hood/ventilation ceiling manufacturer's instructions

Important

- When installing and removing aerosol separators, use only safe steps and climbing aids.
- For installation and removal of the separator, use protective equipment, see chapter 2.2
- All cooking appliances below the hood must be switched off and must not have any residual thermal heat!
- There should be no objects or utensils under the hood in the area of the work surface that could pose a hazard (e.g. knives, etc.)

Important

Danger! Slipping hazard when filters are polluted.

5. Cleaning the separator

The separators must be cleaned regularly (at least according to the cleaning instructions of the operator). We recommend a daily cleaning. The cleaning can be done in a commercial dishwasher. **Any cleaning agent with a release for stainless steel 1.4301 can be used.** The cleaning is recommended by a qualified specialist after cleaning plan.

Please note with the combination separator series FF4-S35A/AD/G35A/AD,FS-20K35/K40, FM-40KS/KG:

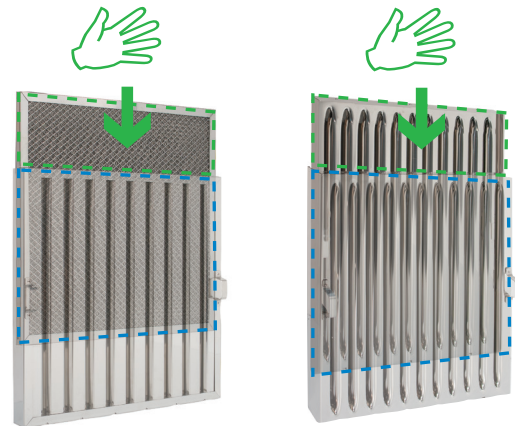
The rear elements can be cleaned separately.

Unmounting of the rear filter:

Unlock the lock and pull the filter out of the guide.

Mounting the rear filter:

Unlock the lock and insert approx. 65% of the filter into the separator, then let the filter "fall" into the separator. Check whether the lock is properly engaged.



6. Maintenance of the separator

- The separators must be checked regularly for damage and replaced if necessary
- The separators are to be exchanged for new ones after a kitchen burn!

www.WALPOL.eu