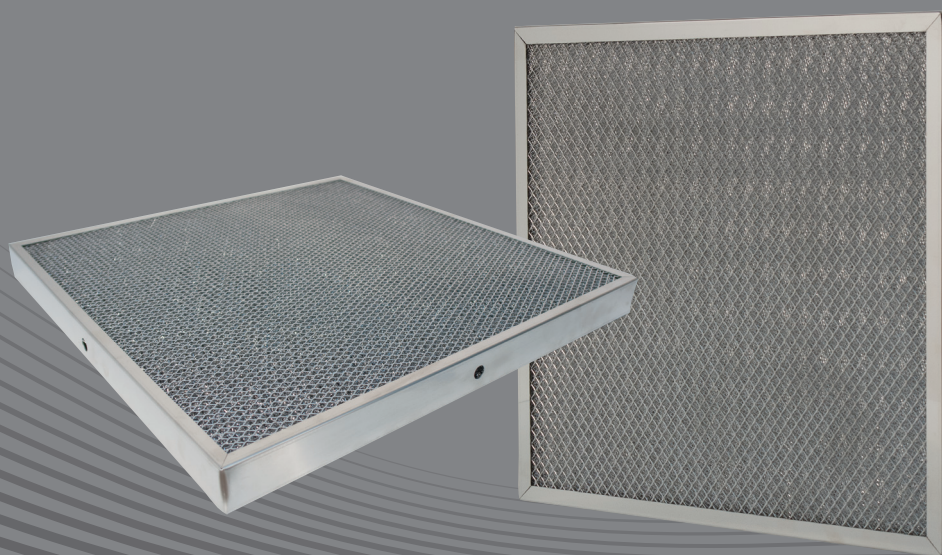


# WALPOL

Assembly and operating instructions

Filter F-14, F-15 and F-16 series



Version 5.2  
B01

# Content

<b>1. General information</b> .....	<b>2</b>
<b>2. Important safety instructions</b> .....	<b>2</b>
2.1. Personal protective equipment.....	2
2.2. Personal.....	2
<b>3. Description</b> .....	<b>3</b>
3.1. Application area.....	3
<b>4. Installation</b> .....	<b>3</b>
4.1. Commissioning.....	3
4.2. Note on installation / removal.....	3
<b>5. Cleaning the filters</b> .....	<b>4</b>
<b>6. Filter maintenance</b> .....	<b>4</b>

## 1. General information

For reasons of clarity, these operating instructions do not contain all detailed information and cannot take into account every conceivable case of setting, operation or maintenance.

If you require further information or encounter problems not listed in the operating instructions, please contact our customer service department with confidence. We reserve the right to make changes in the interest of technical progress!

## 2. Important safety instructions

Planners, plant constructors and operators are responsible for proper installation and operation in accordance with the intended use.

- Read the operating instructions completely and carefully.
- Operating instructions and other applicable documents must be kept. They must be available on site at all times.
- Local and national laws and regulations must be observed and complied with.
- Consider the plant-relevant conditions and requirements of the plant manufacturer or plant builder.
- Safety devices must not be dismantled, bypassed or rendered inoperative.
- The filter may only be used when in perfect condition.

### 2.1. Personal protective equipment

**Protective equipment must be worn when installing and removing the filter.**

- Protective gloves
- Safety goggles
- Dust mask

### 2.2. Personal



#### **Danger**

**Untrained, unqualified or uninstructed personnel must not operate the system!**

The personnel for operation, maintenance and repair must be appropriately qualified for this work and be familiar with the installation, operating and maintenance instructions, in particular with regard to the instructions contained therein and the applicable regulations on occupational safety and accident prevention.

### 3. Description

#### 3.1. Application area

- The filters are suitable for filter applications in ventilation systems



#### Note

We recommend discharge velocities of 0.8-3.0m/s.

### 4. Installation

#### 4.1. Commissioning

Tools needed: Pop riveter at version hole, step or ladder

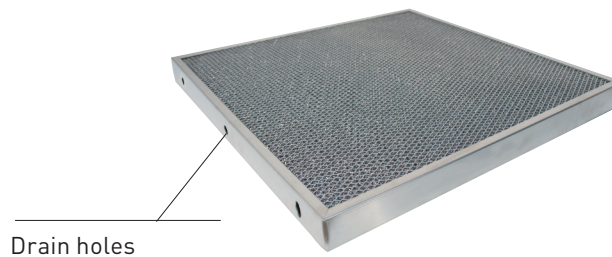


#### Important

Before the first use, the filters must be cleaned to remove any production residues of oil.

#### Version drain hole:

The drain holes of the frame must point downwards during installation!



#### Version bore:

##### Required tools: Pop riveter

Mount handle by means of rivets and pop rivet pliers



#### Version threaded hole:

Screw in round handle



#### 4.2. Note on installation / removal

##### Safety note

- If necessary, use a safe step or climbing aids when installing and removing the filters.
- Use protective equipment for installation and removal of the filter, see chapter 2.1.

#### Important

Attention! Danger of slipping if filters are dirty.

## 5. Cleaning the filters

The filters must be cleaned regularly (at least according to the operator's cleaning instructions).

### **F-14 + F-15 series:**

Cleaning can be done in a commercial dishwasher. (Cleaning agent with release for stainless steel)

### **F-16 series:**

Cleaning can be done in a commercial dishwasher. (do not use detergents containing chlorine, ph-neutral)



### **Note**

**After cleaning, do not reinstall the filter until it is dry!**

## 6. Filter maintenance

- The filters must be regularly checked for damage and replaced if necessary